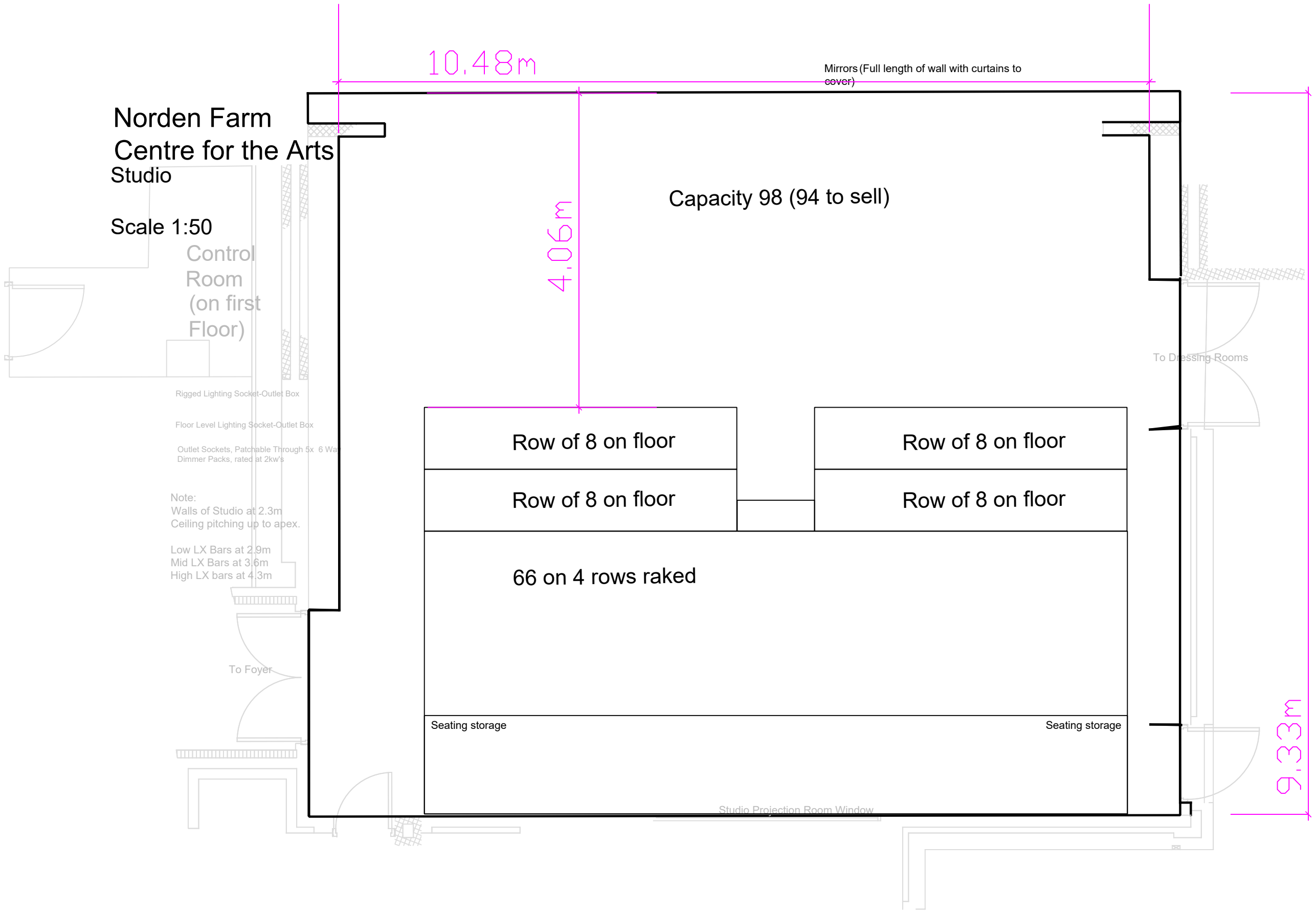


Norden Farm Centre for the Arts Studio

Scale 1:50

Control
Room
(on first
Floor)

- Rigged Lighting Socket-Outlet Box
- Floor Level Lighting Socket-Outlet Box
- Outlet Sockets, Patchable Through 5x 6 Wa Dimmer Packs, rated at 2kw's
- Note:
Walls of Studio at 2.3m
Ceiling pitching up to apex.
- Low LX Bars at 2.9m
Mid LX Bars at 3.6m
High LX bars at 4.3m



10.48m

Mirrors (Full length of wall with curtains to cover)

Capacity 98 (94 to sell)

4.06m

Row of 8 on floor

Row of 8 on floor

Row of 8 on floor

Row of 8 on floor

66 on 4 rows raked

Seating storage

Seating storage

To Dressing Rooms

To Foyer

Studio Projection Room Window

9.33m

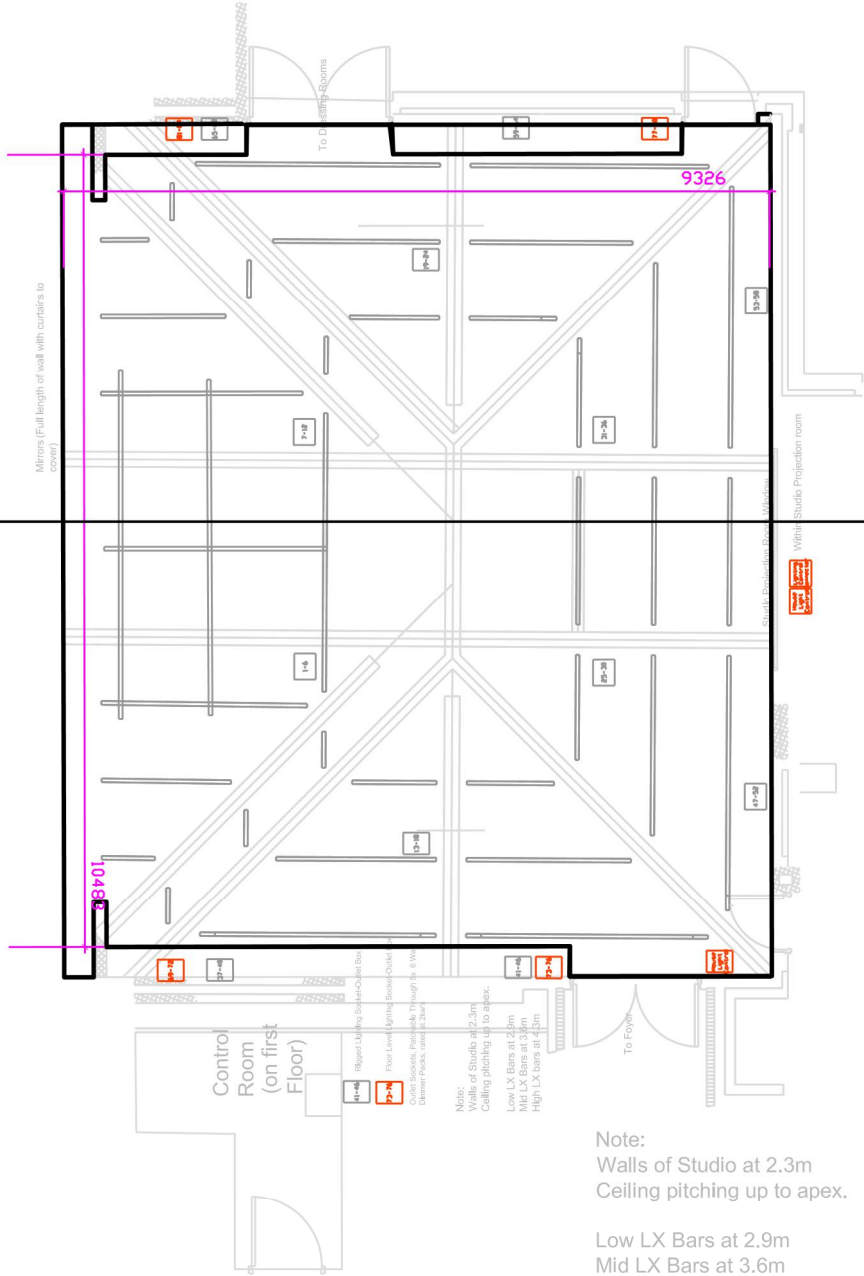
Norden Farm Centre for the Arts

STUDIO SECTION

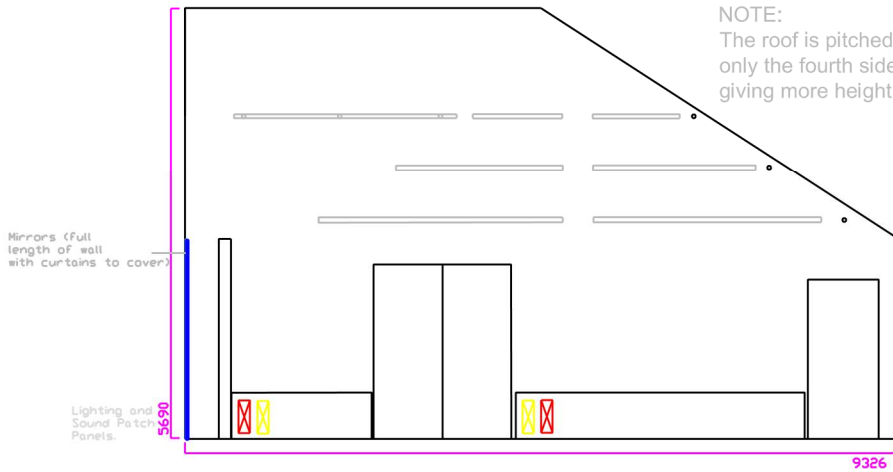
Scale 1:100

A

A



SECTION AA



Note:
Walls of Studio at 2.3m
Ceiling pitching up to apex.

Low LX Bars at 2.9m
Mid LX Bars at 3.6m
High LX bars at 4.3m

NOTE:
The roof is pitched on THREE sides, it is only the fourth side that is flat (well a ridge!) giving more height as shown in the section.

Norden Farm Centre for the Arts Studio

Scale 1:50

Control Room
(on first
Floor)

Mirrors (Full length of wall with curtains to
cover)

1-6 Lighting Socket-Outlet Box

Floor Level Lighting Socket-Outlet Box

Outlet Sockets, Patchable Through 5x 6 Wa
Dimmer Packs, rated at 2kw's

Note:
Walls of Studio at 2.3m
Ceiling pitching up to apex.

Low LX Bars at 2.9m
Mid LX Bars at 3.6m
High LX bars at 4.3m

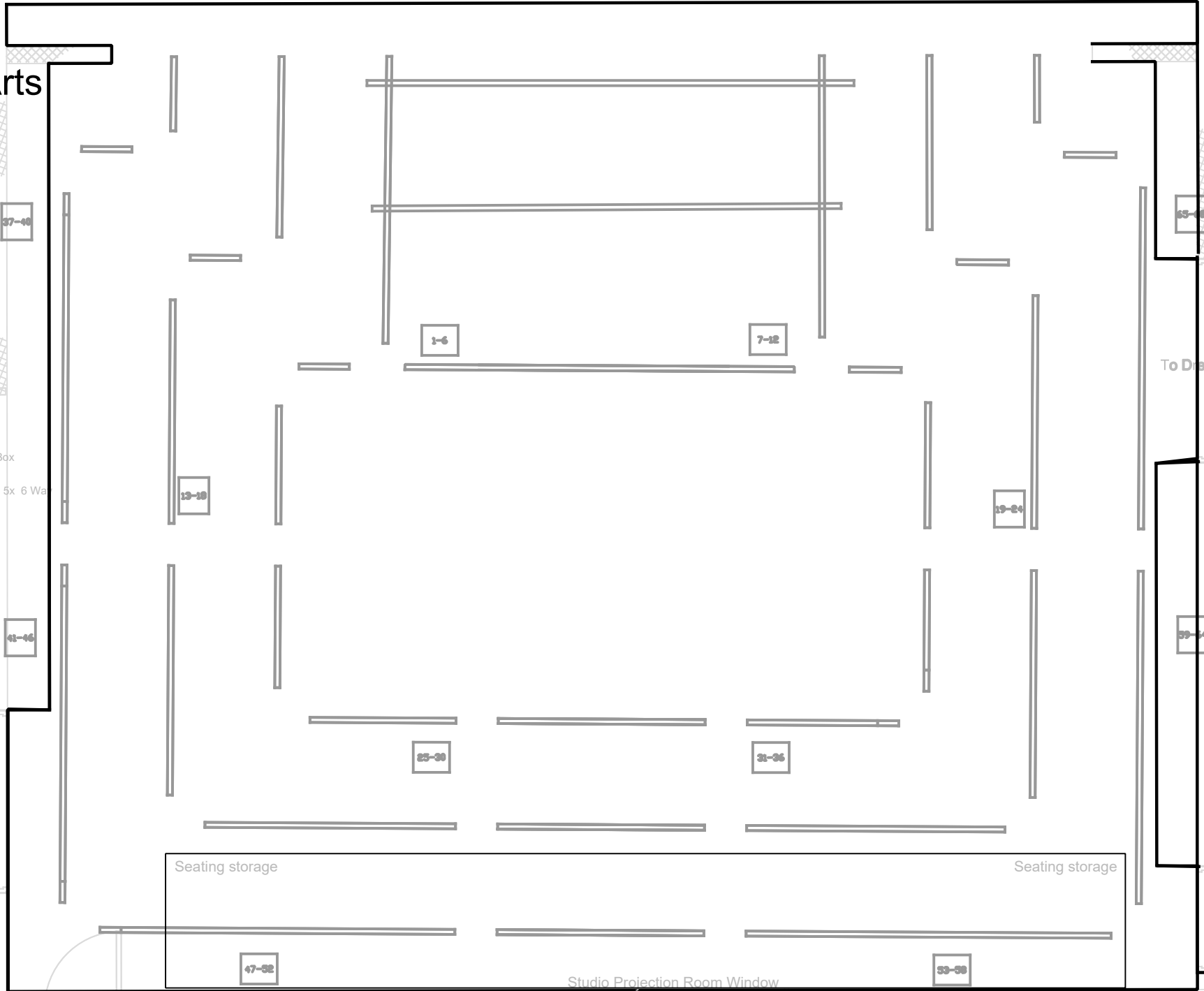
To Foyer

To Dressing Room

Seating storage

Seating storage

Studio Projection Room Window



Norden Farm Centre for the Arts - Studio

